

Thivent Besson

thivent.besson@eduvand.ch

635.ch

PL

Problèmes

(max / min)

Algèbre

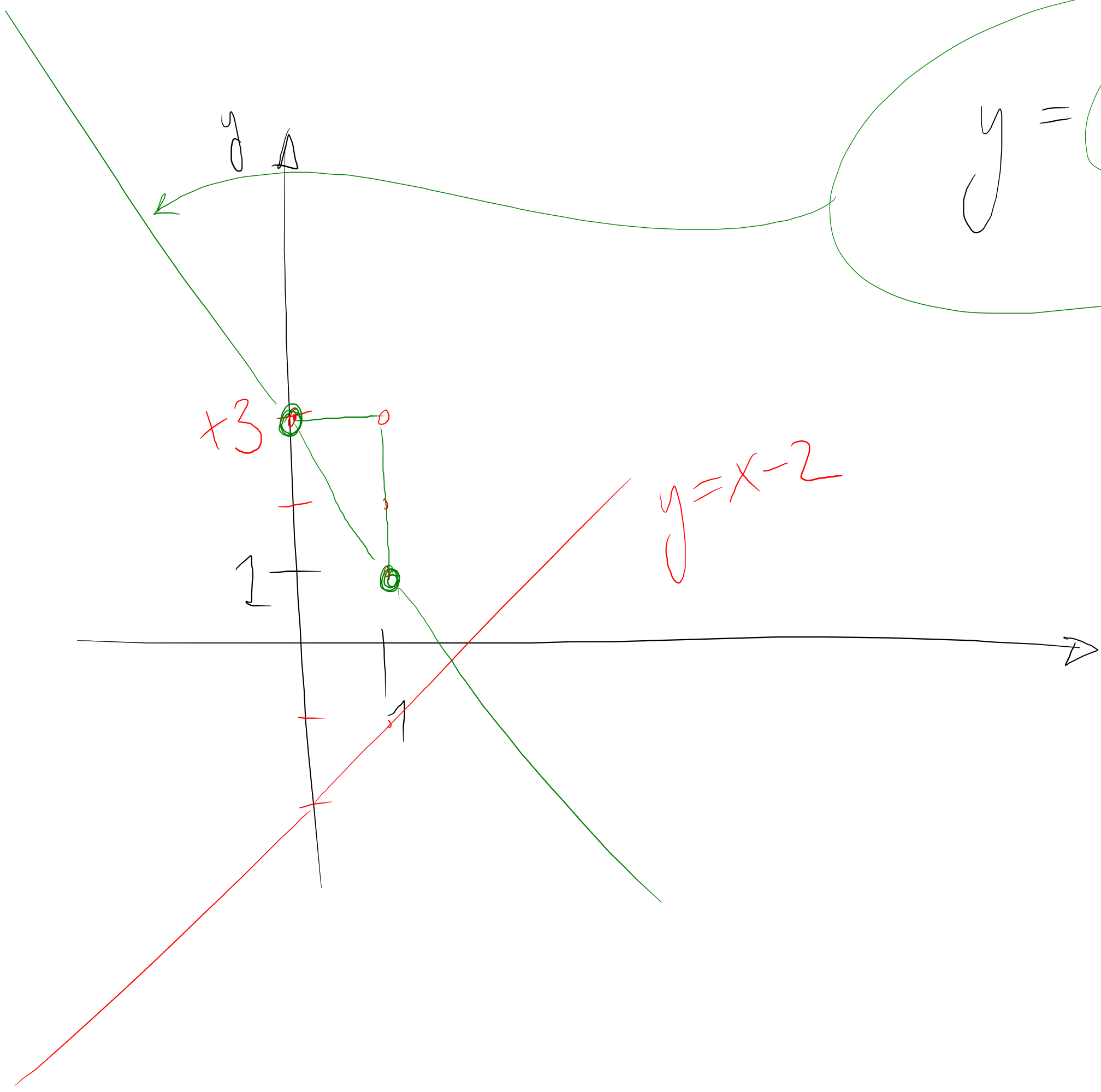
Graphes

Dessiner le graphe de

a) $y = x - 2$

b) $y = \frac{1}{2}x + 4$

c) $3y = 1 - x$



$$y = -2x + 3$$

ordonnée
à l'origine

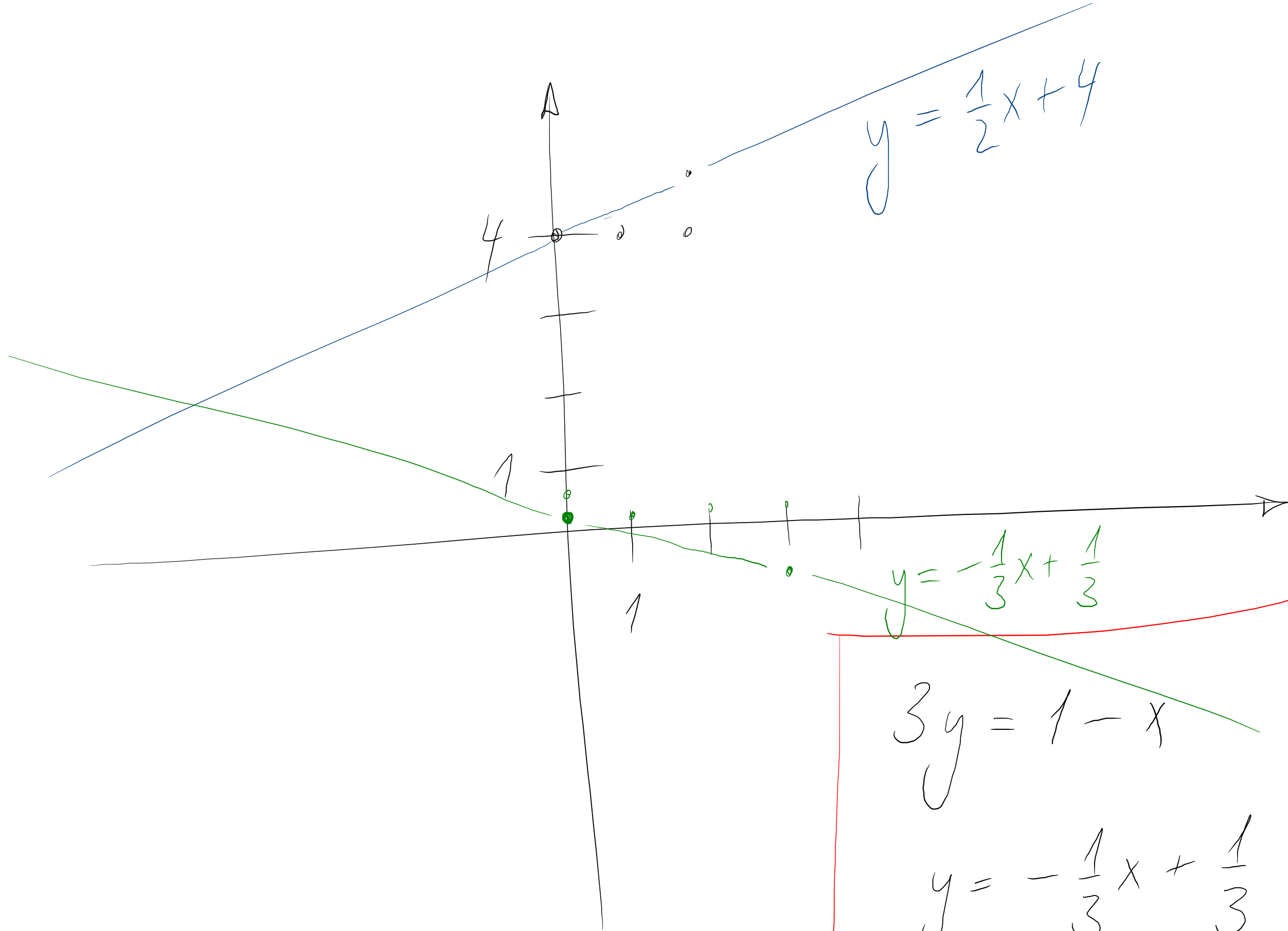
pente $-\frac{2}{1}$ $\frac{dv}{dh}$

$$y = x - 2$$

+3

1

x



$$\frac{1}{2} \frac{dv}{dh}$$

$$3y = 1 - x$$

$$y = -\frac{1}{3}x + \frac{1}{3}$$

$$3y = 1 - x$$

$$y = 0 \quad x = 1$$

$\begin{matrix} x & y \\ (1, & 0) \end{matrix}$

$$y = -1 \quad x = 4$$

$\begin{matrix} x & y \\ (4, & -1) \end{matrix}$

