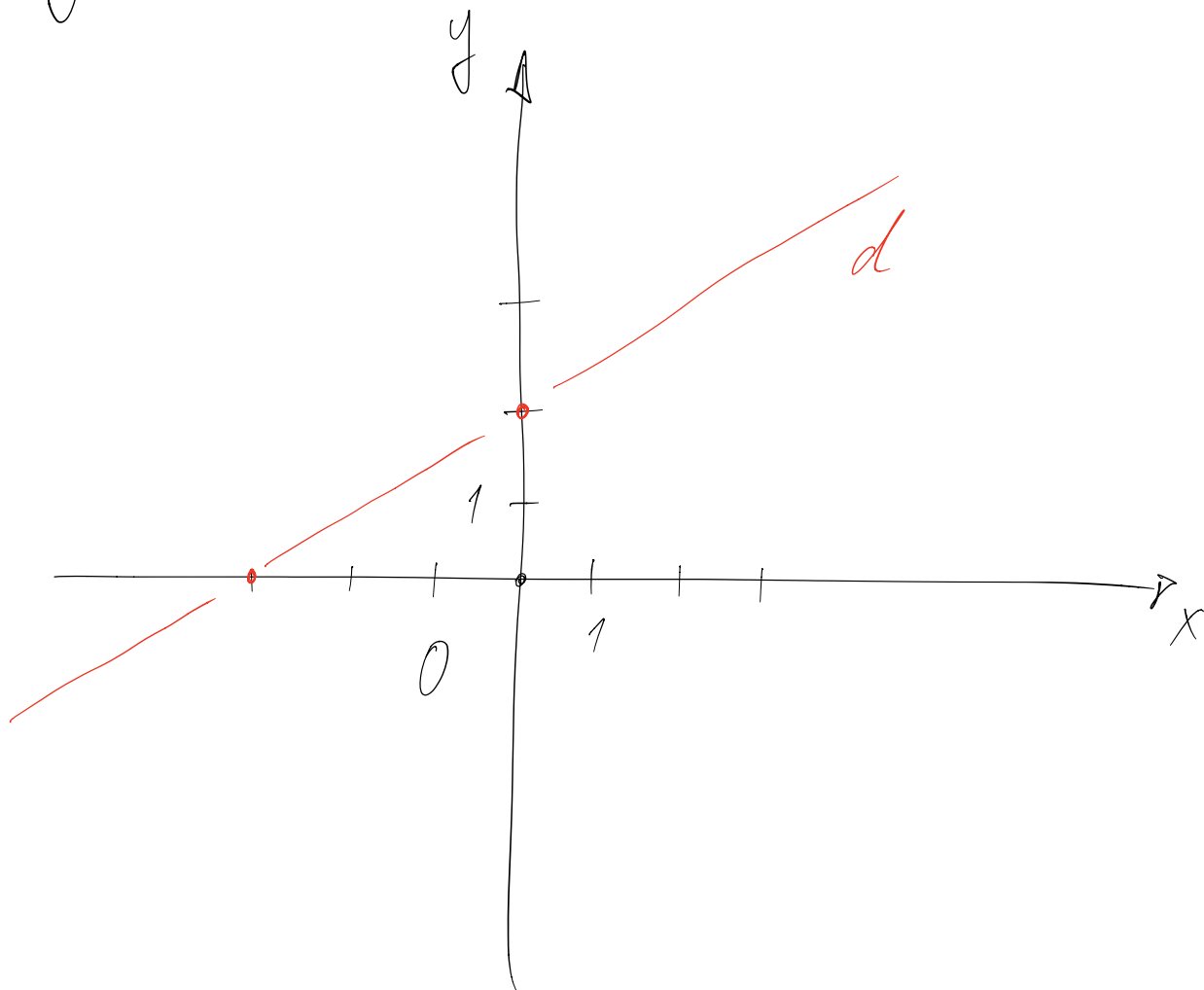


$$2) \quad 2x - 3y + 6 = 0$$

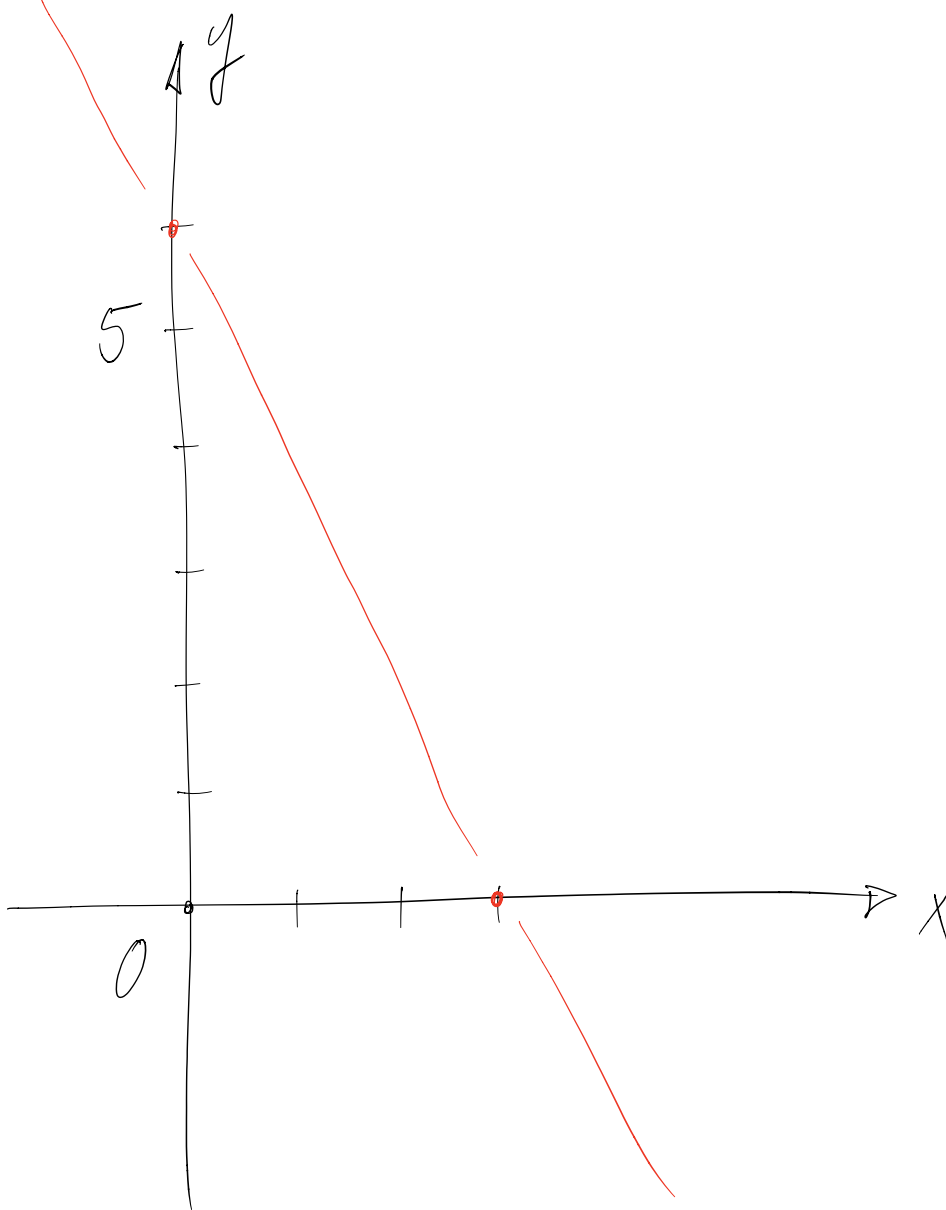
$$\boxed{x=0} \quad -3y + 6 = 0 \Leftrightarrow \boxed{y=2}$$

$$\boxed{y=0} \quad 2x + 6 = 0 \Leftrightarrow \boxed{x=-3}$$



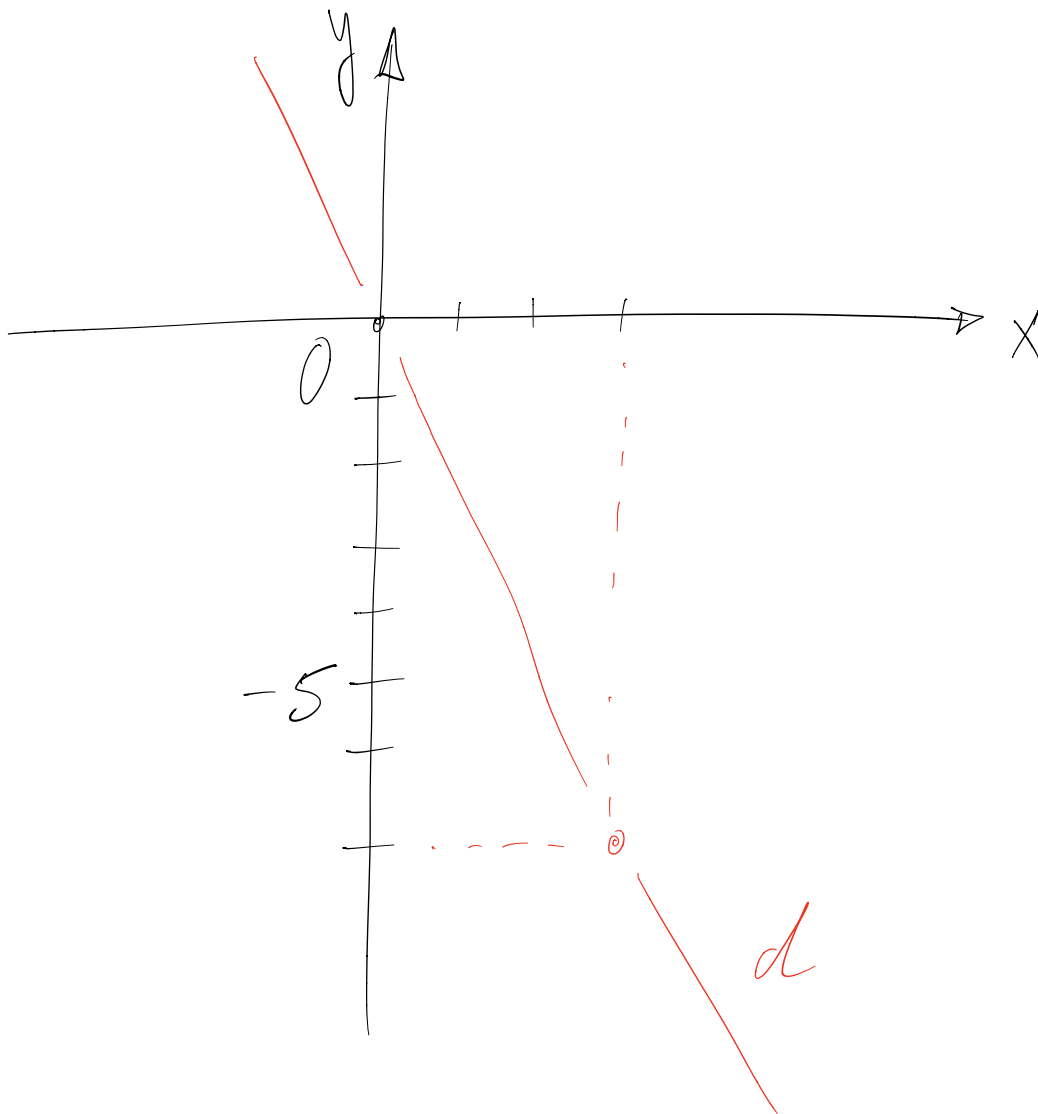
$$b) 5x + 3y - 15 = 0$$

$(0; 5) \in d$  et  $(3; 0) \in d$

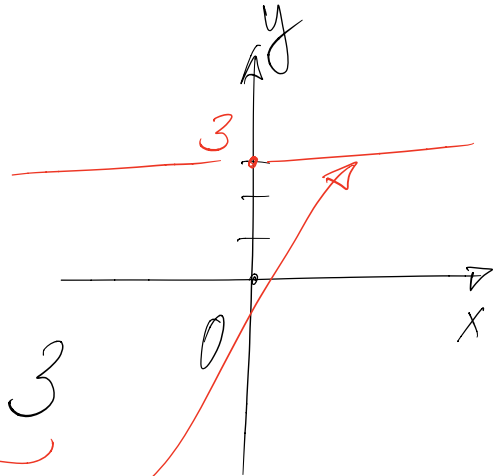
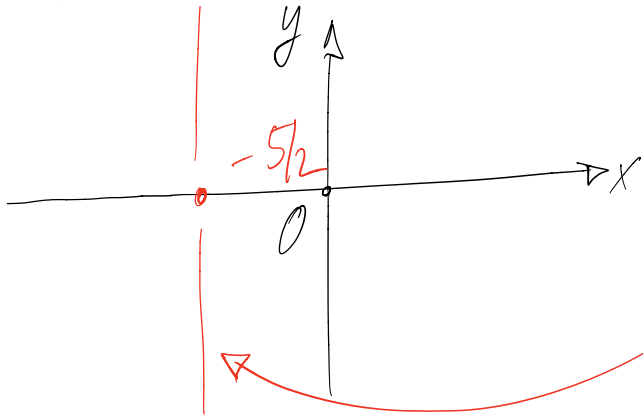


c)  $7x + 3y = 0$  passe por  $(0;0)$

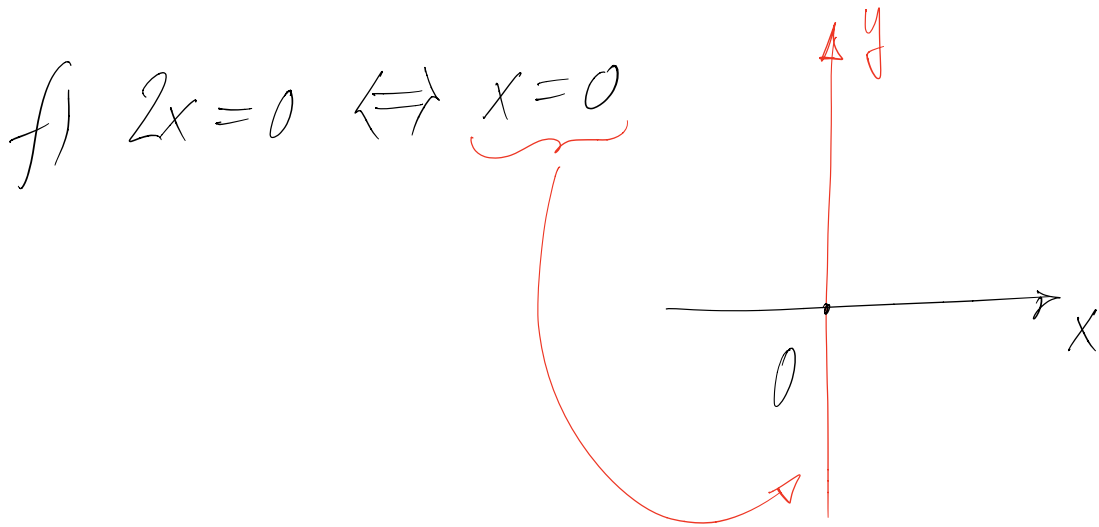
$y = -\frac{7}{3}x$  pente



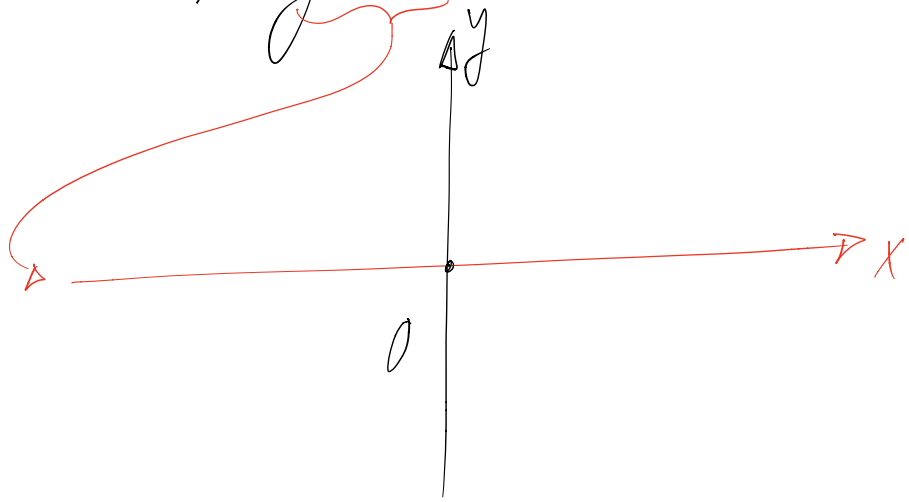
$$d) 2x + 5 = 0 \Leftrightarrow x = -5/2$$



$$e) -3y + 9 = 0 \Leftrightarrow y = 3$$



$$g) -5y = 0 \Leftrightarrow y = 0$$



$$h) 4x + 8 = 5y - 15 \Leftrightarrow 4x - 5y + 23 = 0$$

$$x = 0, y = \frac{23}{5} = 4,6$$

$$y = 0, x = -\frac{23}{4} = -5,75$$

