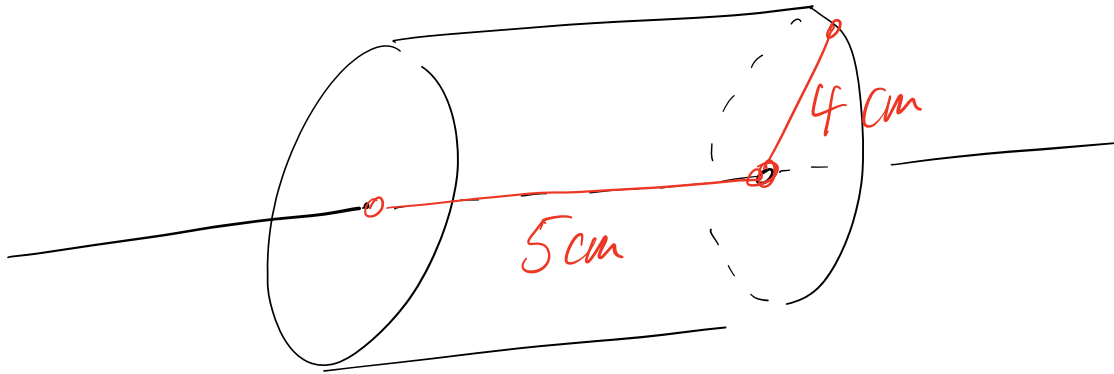


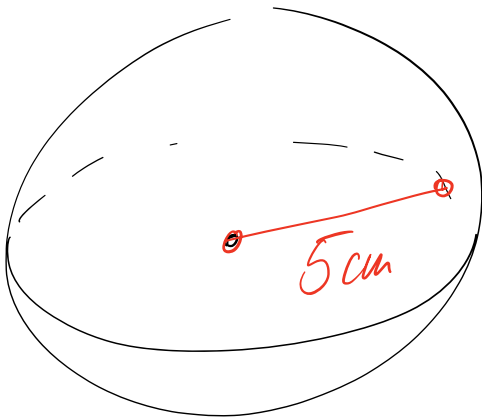
a)



$$V = \text{Base} \cdot \text{hauteur} = (\pi \cdot 4^2) \cdot 5 = 80 \cdot \pi$$

$$\approx 251,33 \text{ cm}^3$$

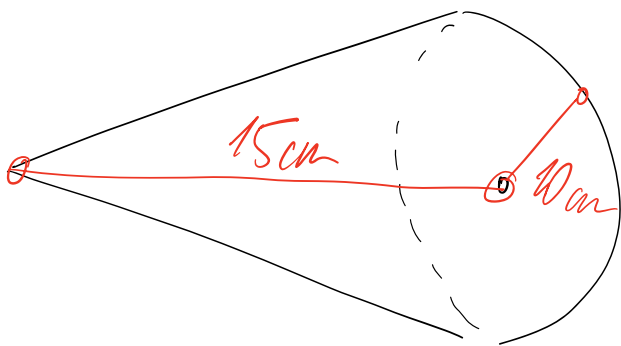
b)



$$V = \frac{4}{3} \pi \cdot 5^3 = \frac{500\pi}{3}$$

$$\approx 523,60 \text{ cm}^3$$

c)



$$V = \frac{1}{3} \cdot B \cdot h$$

$$= \frac{1}{3} \cdot \pi \cdot 100 \cdot 15 = 500\pi$$

$$\approx 1570,80 \text{ cm}^3$$