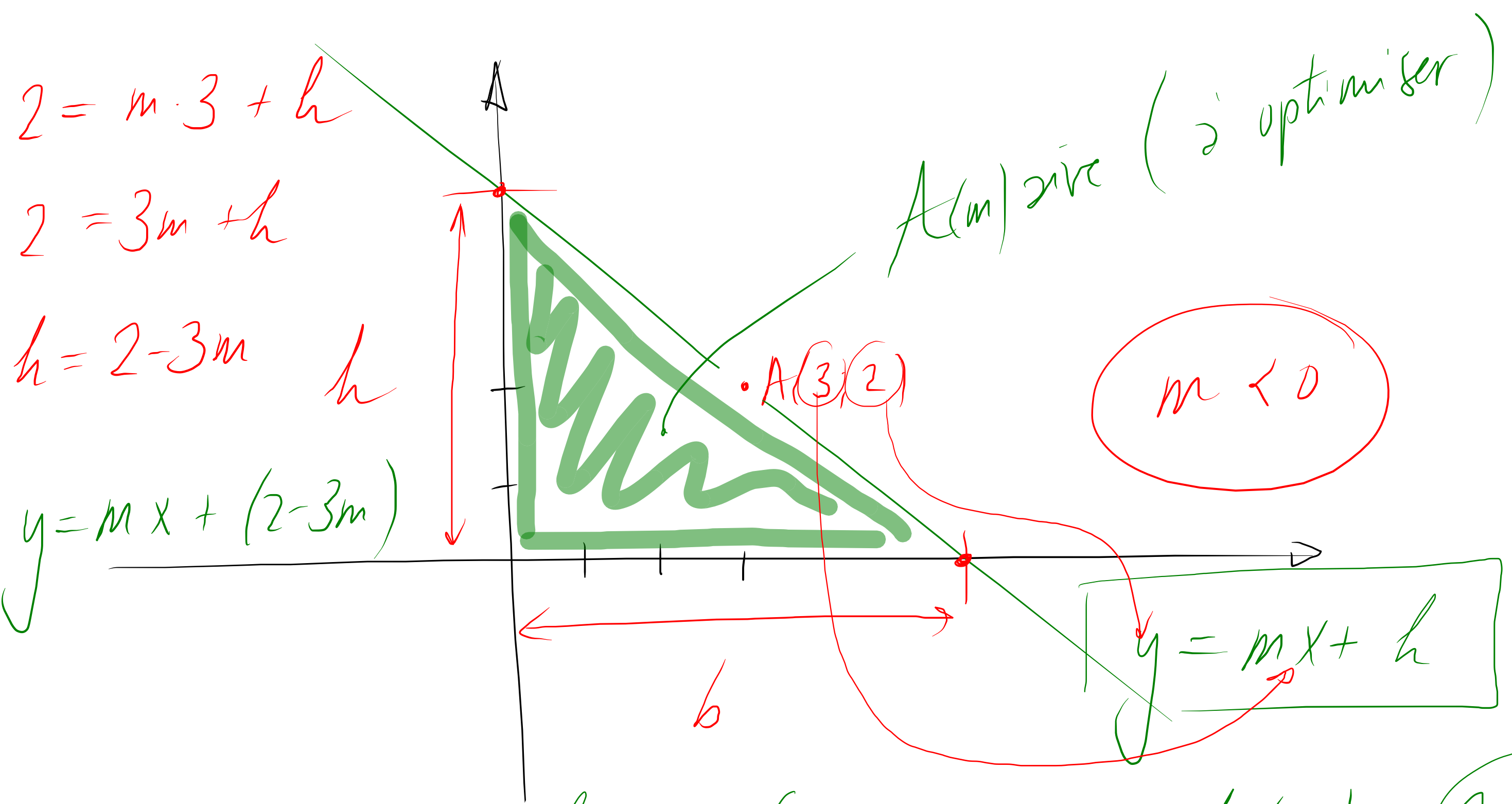


2.9.17

2.9.18

3.4.2 → 3.4.5

↑
2 → droit



① Trouver h en fonction de m : $h(m) = 2 - 3m$

② Trouver $b(m)$: $0 = mx + 2 - 3m$
 $x = \frac{3m - 2}{m} \Rightarrow b(m) = \frac{3m - 2}{m}$

$$\frac{-9m^2 + 12m - 4}{2m} =$$

$$(2m)$$

$$\frac{-9m^2}{2m} + \frac{12m}{2m} - \frac{4}{2m} =$$

$$-\frac{9}{2}m + 6 - \frac{2}{m}$$

$$\frac{f'g - fg'}{g^2}$$