

Angles

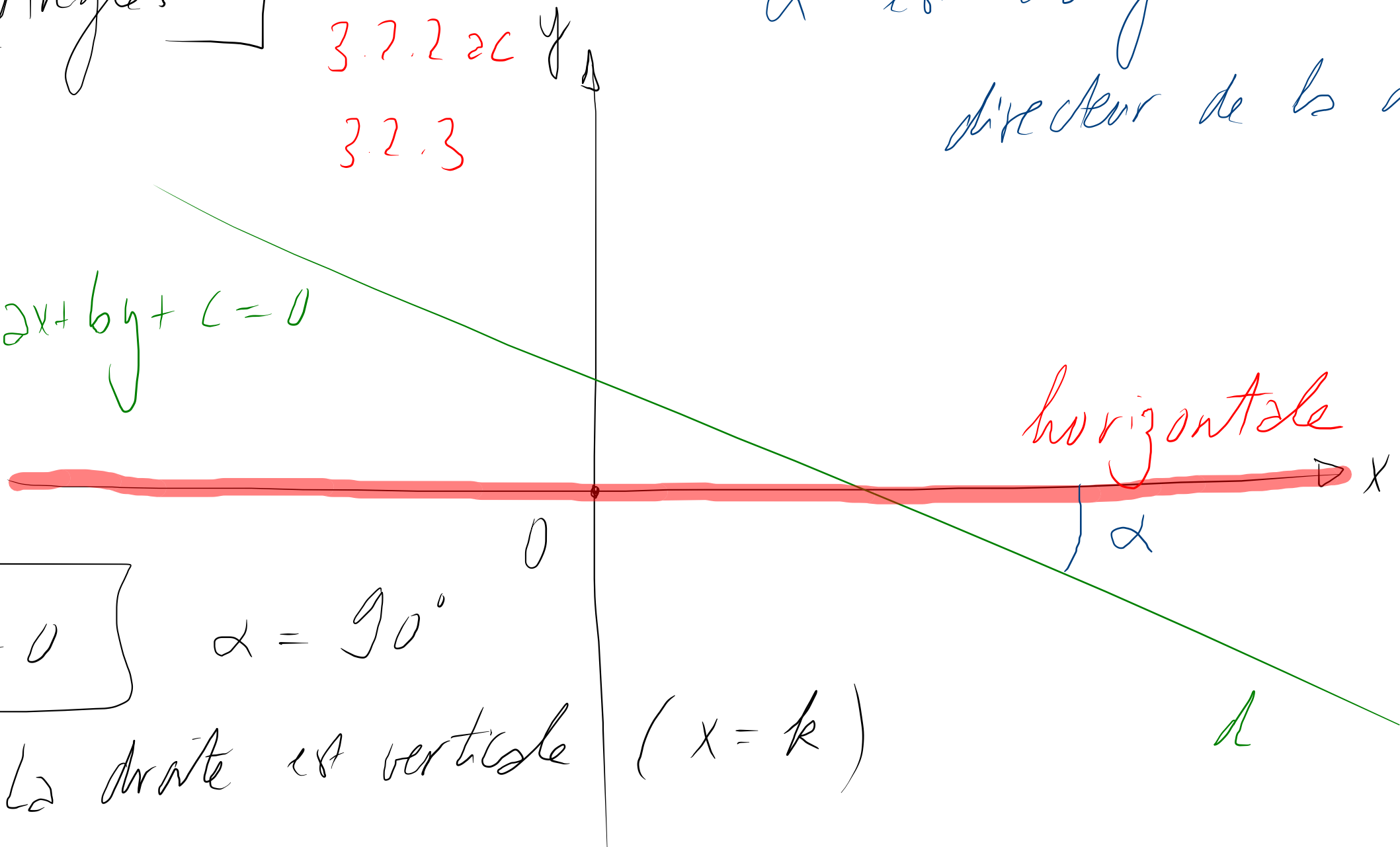
3.2.1

3.2.2 $a < 0$

3.2.3

α est l'angle directeur de la droite

$ax + by + c = 0$



$b = 0$

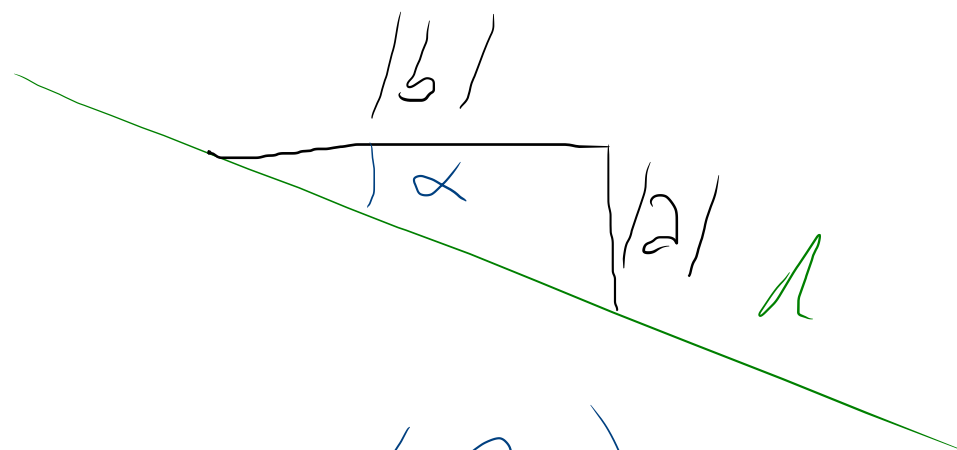
$\alpha = 90^\circ$

La droite est verticale ($x = k$)

$b \neq 0$

$y = -\frac{a}{b}x - \frac{c}{b}$

↑
pente



$\alpha = \tan^{-1}\left(-\frac{a}{b}\right)$

