

7.1

QUESTIONS D'ORDRE GÉNÉRAL

QUANTITATIF DISCRET

x_i	n_i	f_i	$f_i \cdot x_i$

HISTOGRAMME
MODE
MÉDIANE

$$\bar{x} = \frac{\sum f_i \cdot x_i}{n}$$

↑
MOYENNE

QUANTITATIF CONTINU

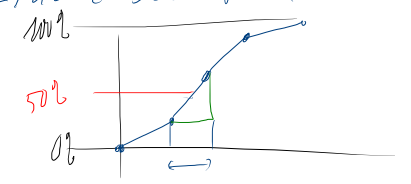
7.14 7.17
7.15
7.16

classes	x_i	n_i	f_i	$f_i \cdot x_i$	F_i

$$\bar{x} = \frac{\sum f_i \cdot x_i}{n}$$

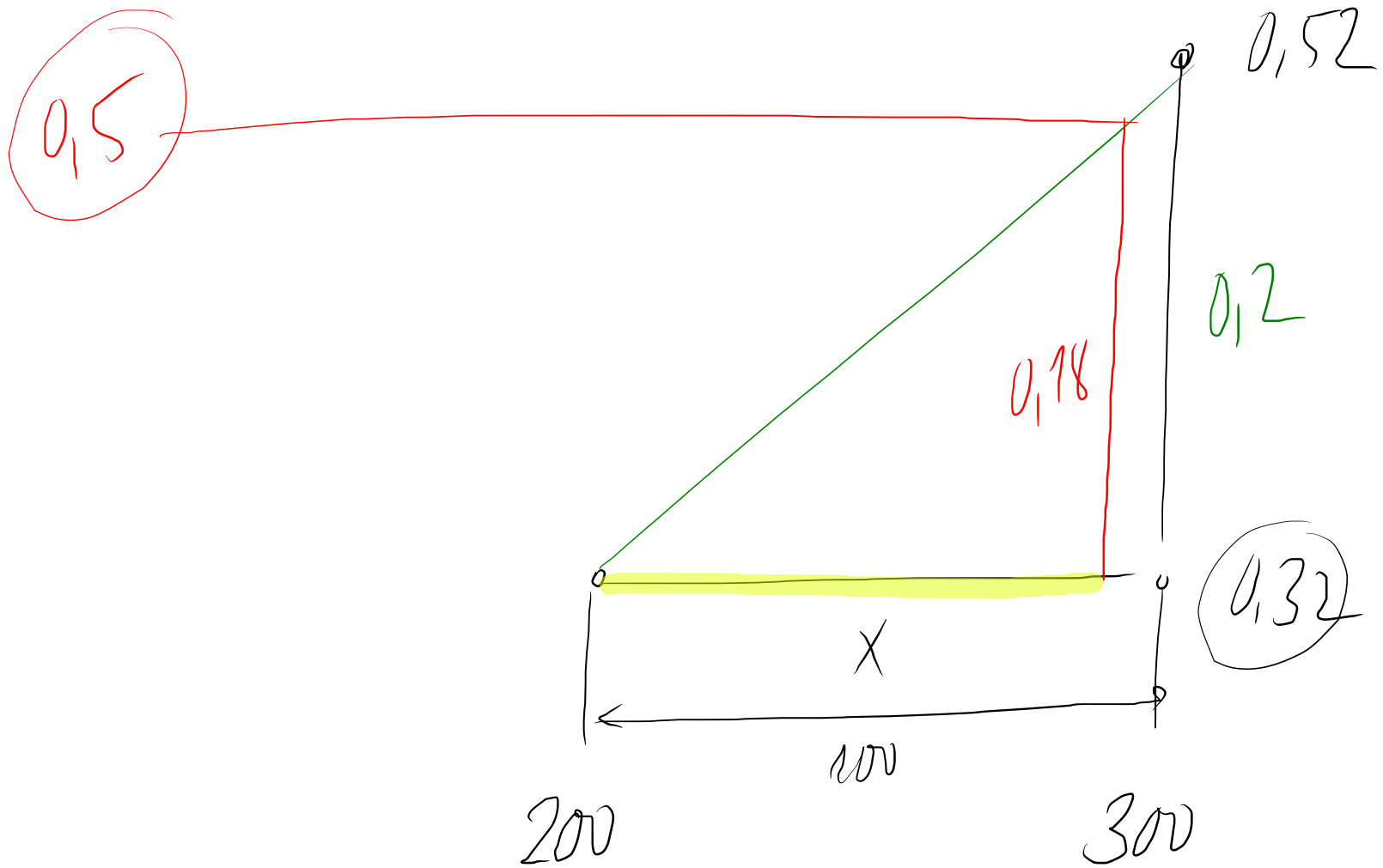
HISTOGRAMME

POLYGONE DES FRÉQ. CUMUL. (F_i)



CLASSE MODALE

CLASSE MÉDIANE / CALCUL DE MÉDIANE



$$\frac{X}{100} = \frac{0.18}{0.12}$$

$$X = 90$$

Mediane: $200 + 90 = 290$