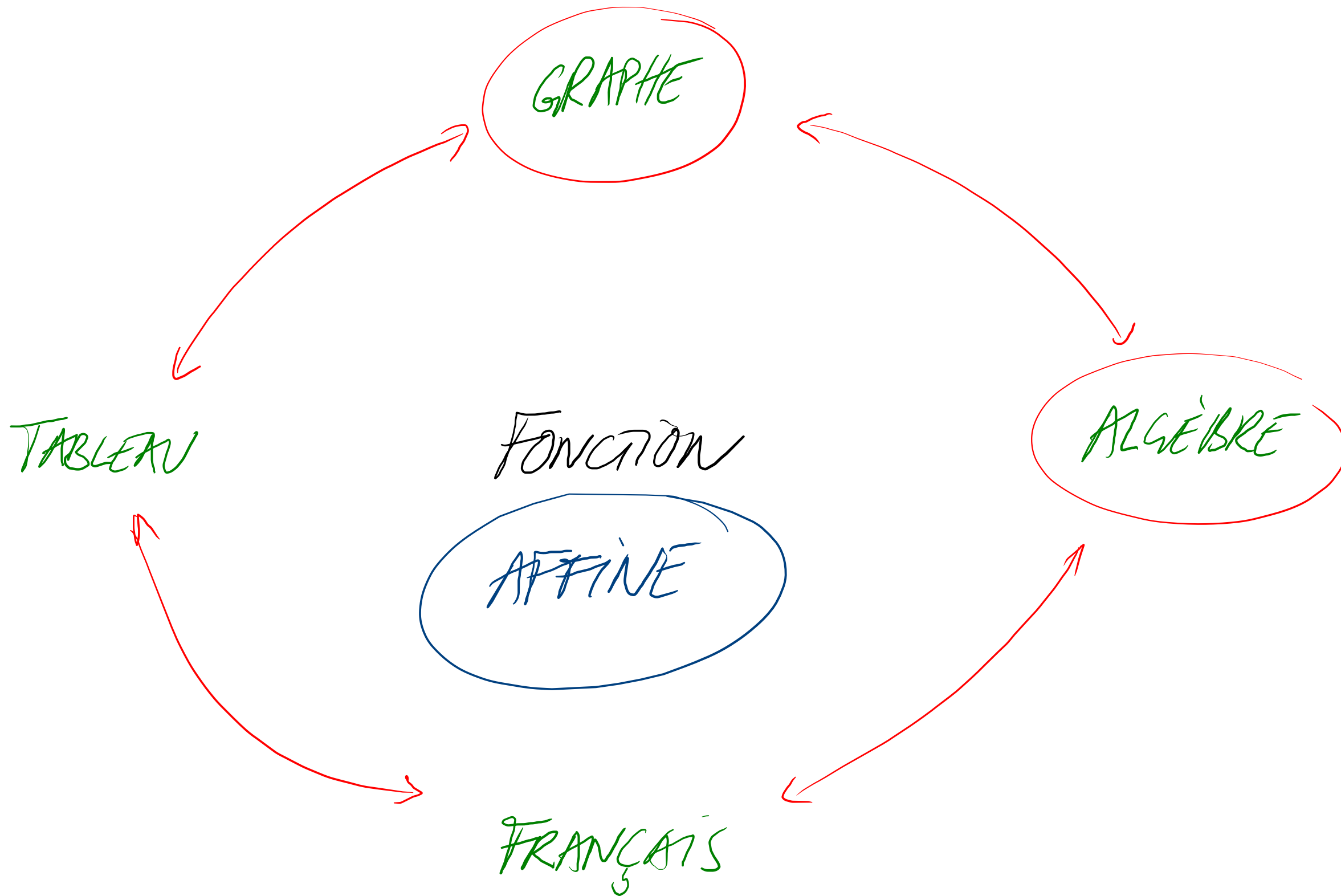
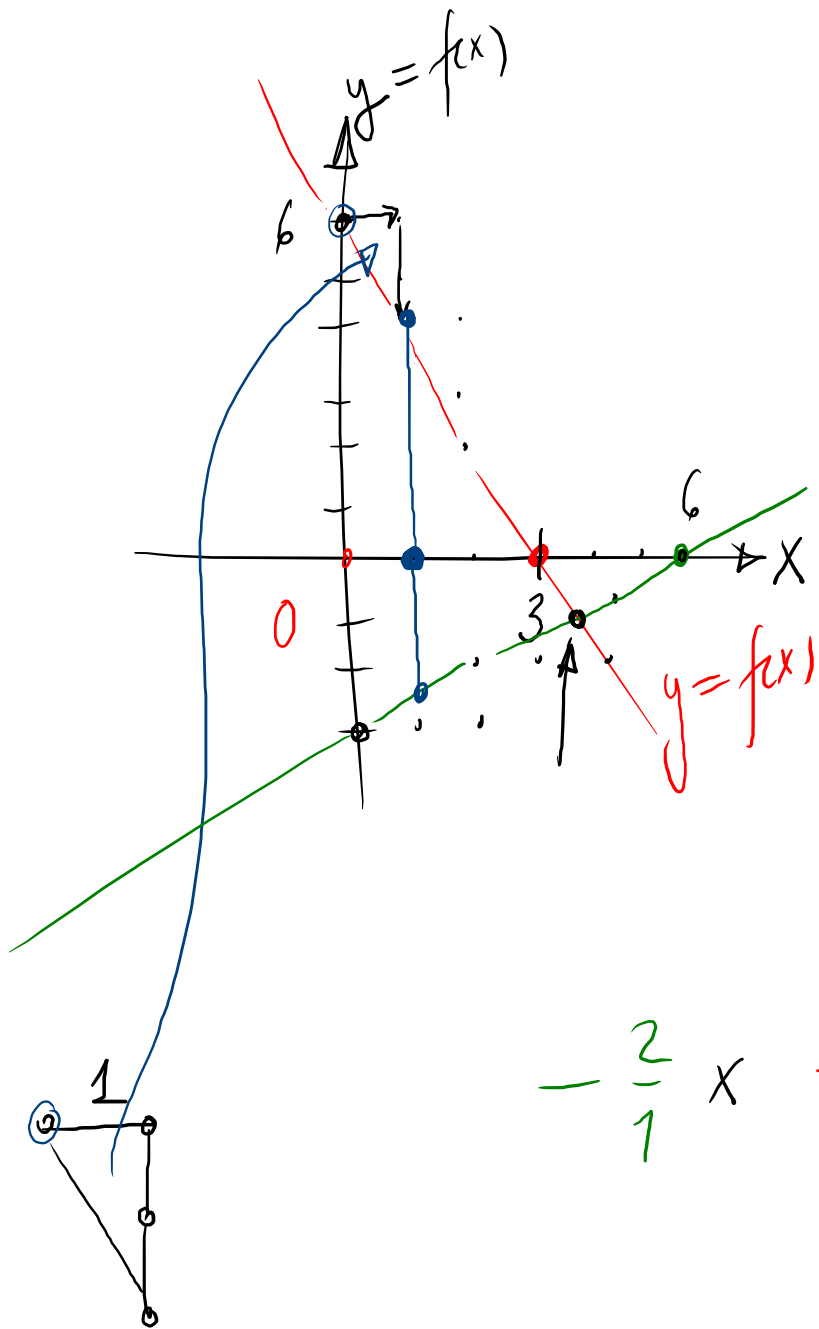
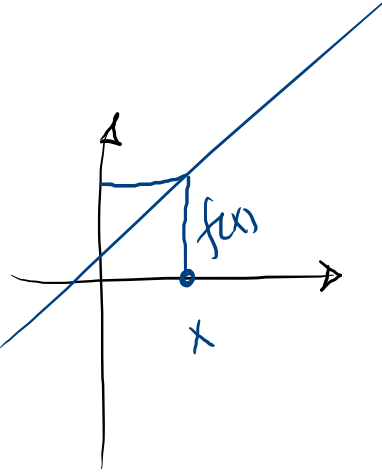


3.3.3

a'

3.3.6





$$g(x) = \frac{1}{2}x - 3$$

$$f(x) = -2x + 6$$

$$f(x) = 0 \Leftrightarrow -2x + 6 = 0$$

$$x = 3$$

$$f(x) > g(x)$$

$$-2x + 6 > \frac{1}{2}x - 3$$

$$g > \frac{5}{2}x$$

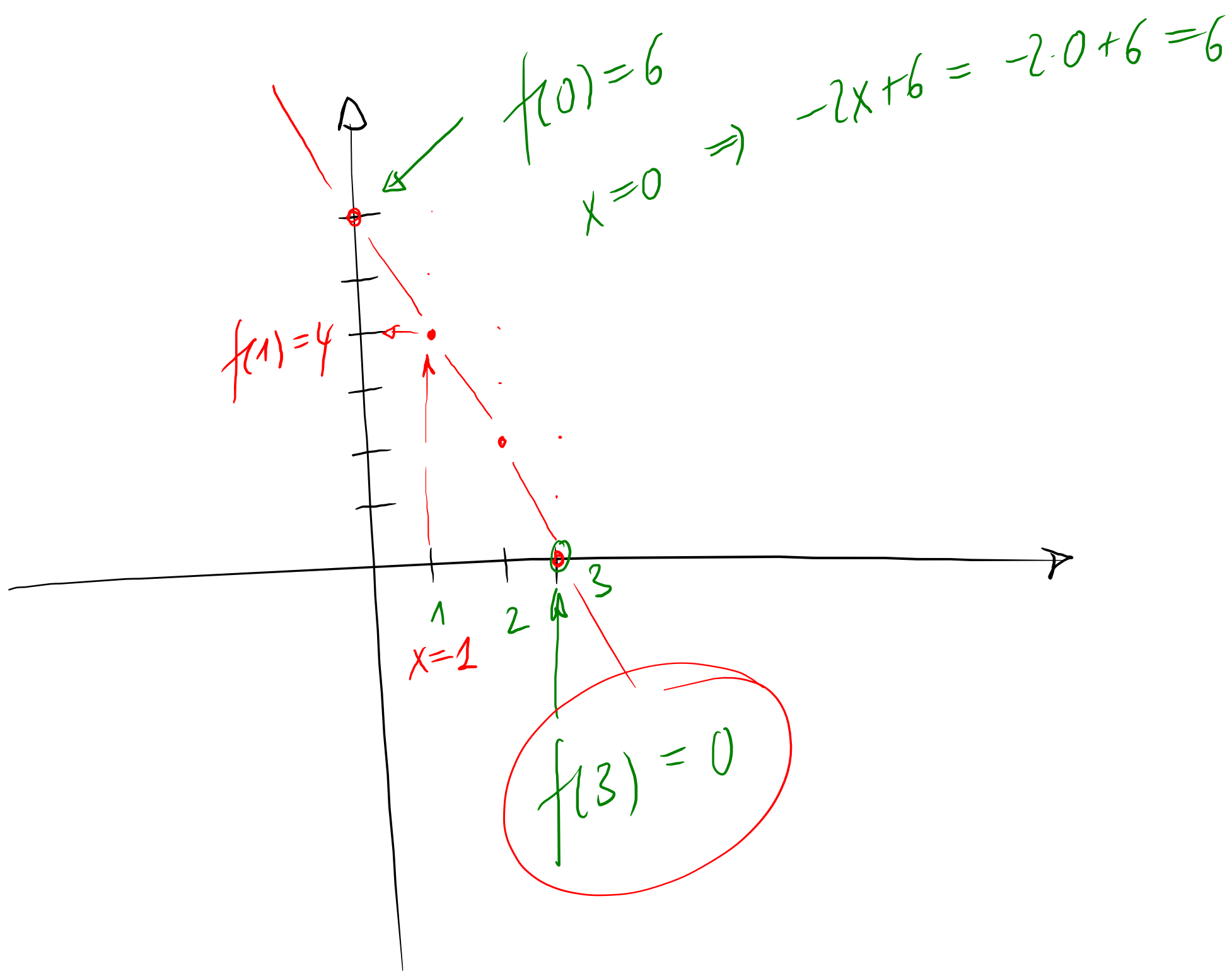
$$\frac{18}{5} > x$$

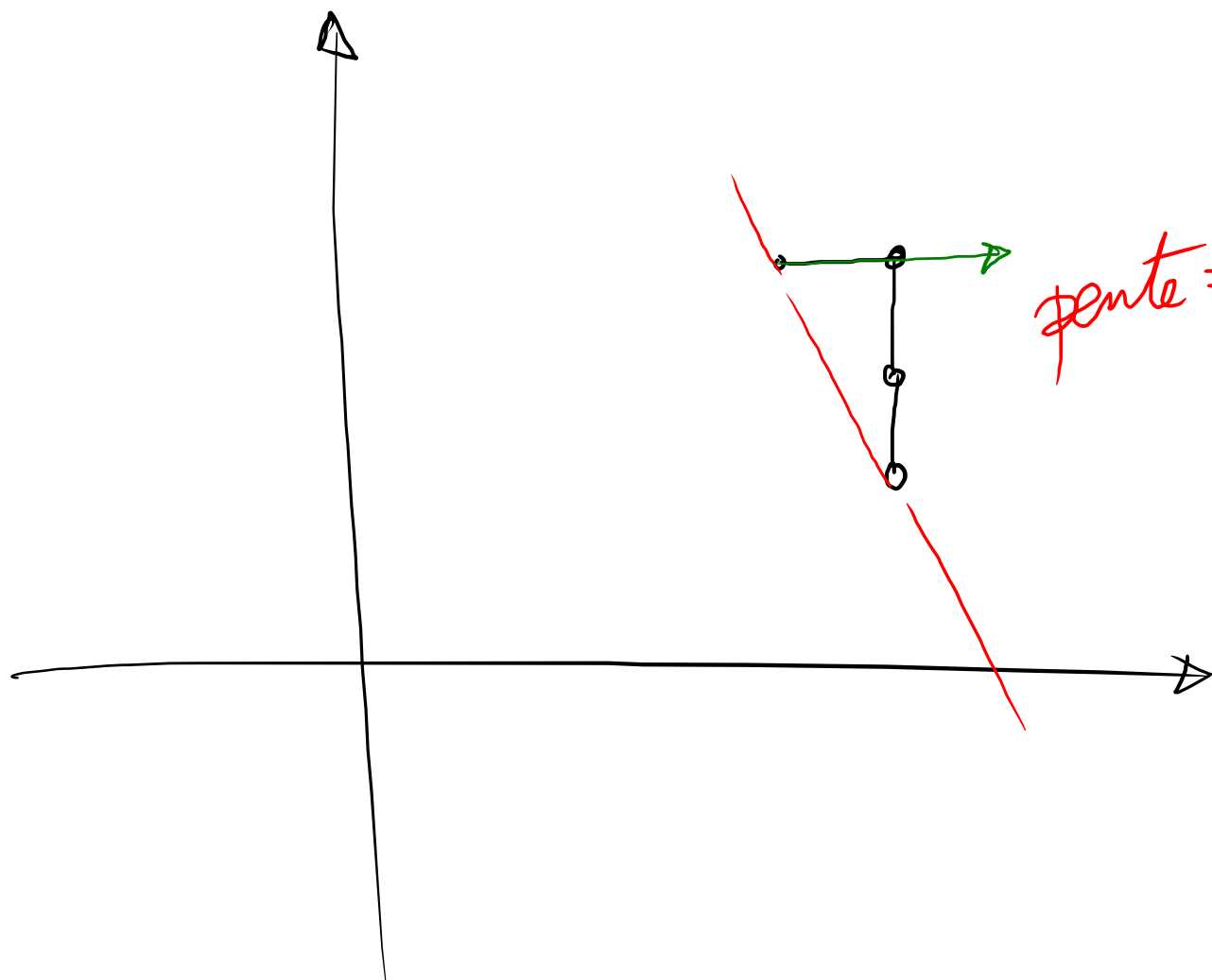
$$x < \frac{18}{5}$$

x est inférieur (strict.)  
à 3,6.

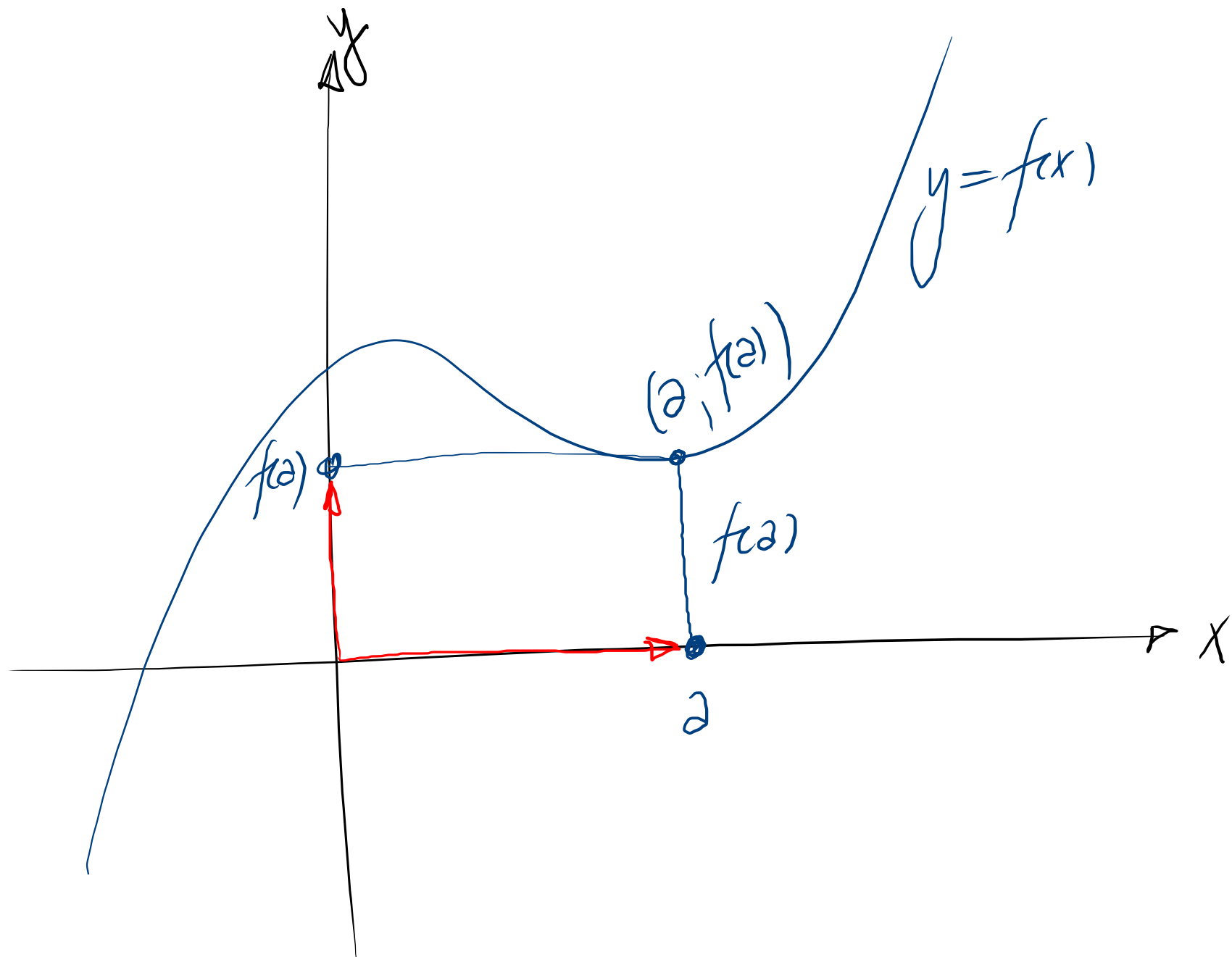
$$-\frac{2}{1}x + 6$$

ordonnée à l'origine



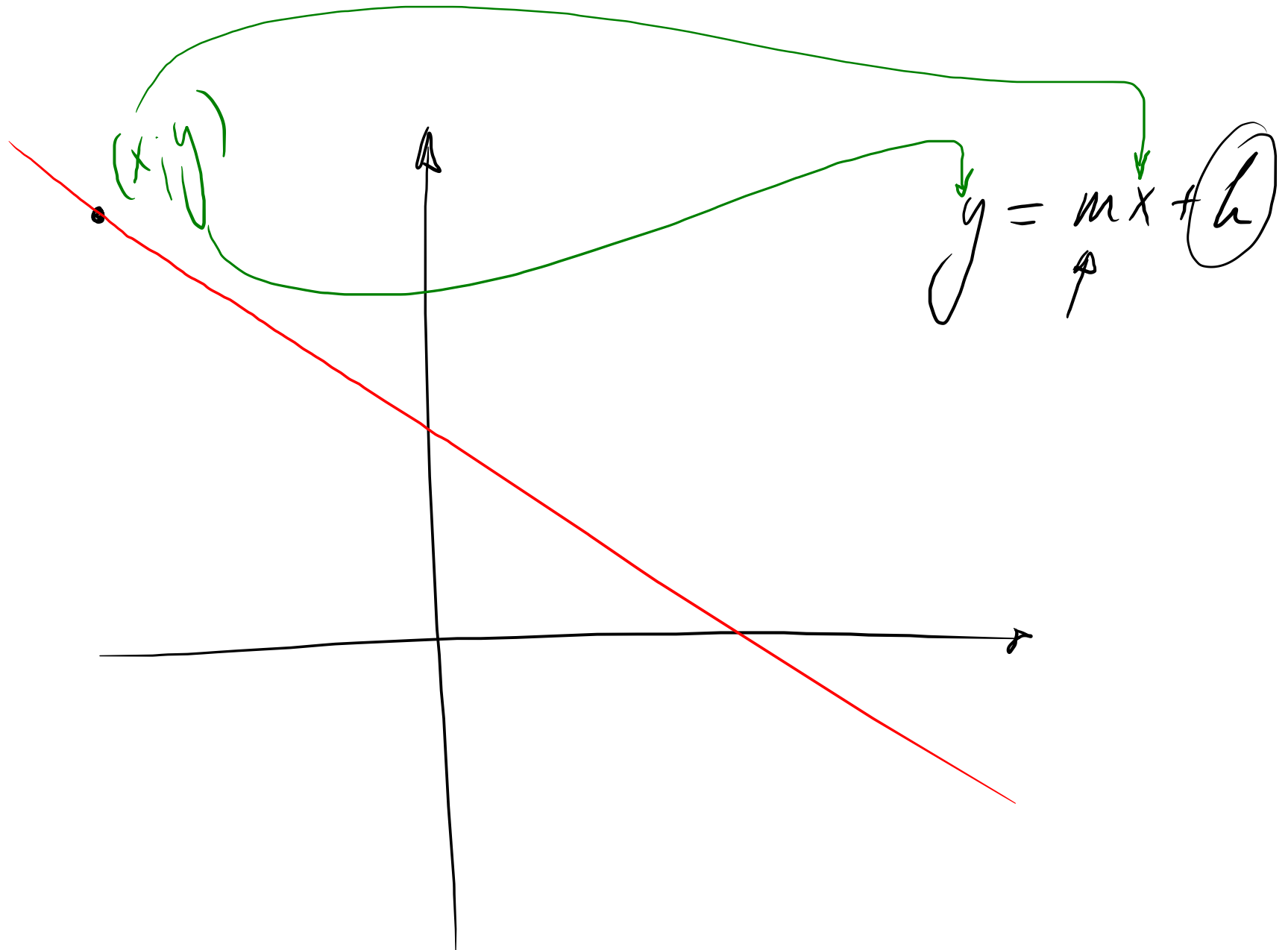


*pente =* 
$$\frac{\text{dist. vert.}}{\text{dist. horiz}}$$



$$f(x) = -2x + 6$$

$x$	$f(x)$
0	6
1	4
-2	10
5	-4
10	-14
3	0



$$y = mx + b$$